

BUSINESS INDICATORS

**AUSTRALIAN
CAPITAL
TERRITORY**

EMBARGO: 11:30AM (CANBERRA TIME) FRI 22 DEC 2000

C O N T E N T S

	<i>page</i>
Notes	2
Summary of findings	3
Selected business indicators	5
 FEATURE ARTICLE	
Cafes and Restaurants Industry in the ACT	6
Legal Services Industry in the ACT.....	8
 TABLES	
1 Business expectations: trading performance, operating income	9
2 Business indicators	10
3 ACT in relation to the rest of Australia	13
4 ACT in relation to the rest of Australia—percentage changes	14
 INFORMATION	
Index of Feature Articles published in ACT Business Indicators	15

- For further information about these and related statistics, contact Nives Marelic on Canberra 02 6207 0311, or the National Information Service on 1300 135 070.

NOTES

FORTHCOMING ISSUES

<i>ISSUE</i>	<i>RELEASE DATE</i>
January 2001	29 January 2001
February 2001	23 February 2001
March 2001	23 March 2001
April 2001	20 April 2001
May 2001	18 May 2001
June 2001	22 June 2001

DATA CHANGES

Consumer Price Index This issue contains the 14th Australian consumer Price Series which incorporates an updated commodity classification and weighting patterns. Minor changes to the composition of some groups have been made. For further details of changes resulting from the introduction of the 14th series CPI, refer to *Information Paper: Introduction of the 14th Series Australian Consumer Price Index* (Cat. no. 6456.0) which was released 29 September 2000.

THE NEW TAX SYSTEM (TNTS)

ABS statistical series are being impacted to varying degrees as a result of The New Tax System, introduced in Australia from 1 July 2000. TNTS includes the removal of Wholesale Sales Tax on most items and the introduction of a Goods and Services Tax (GST). For full effect of those changes, refer to source publications as annotated at the end of the tables in this publication.

Consumer Price Index As CPI measures final transaction prices inclusive of indirect taxes the introduction of The New Tax System (TNTS) had a direct impact on the CPI. The September series in particular has been affected by the introduction of the goods and services tax and the removal of wholesale and some state and territory taxes. For further information see *Information Paper: Price Indexes and The New Tax System* (Cat. no. 6425.0).

SYMBOLS AND OTHER USAGES

ACT	Australian Capital Territory
n.a.	not available
no.	number
n.p.	not available for publication
p	preliminary
. .	not applicable
*	Represents data with a standard error of greater than 25%. Caution should be exercised when using this data.
—	nil or rounded to zero

Peter Damcevski
Acting Regional Director, Australian Capital Territory

SUMMARY OF FINDINGS

UPDATED SERIES

Series updated since the November 2000 issue are: annual state accounts, average weekly earnings, building approvals, established house price index, housing finance, industrial disputes, labour force, new motor vehicle registrations, retail turnover and wage cost index. The feature articles this month are Cafes and Restaurants Industry in the ACT and Legal Service Industry in the ACT.

Average weekly earnings Trend full-time adult ordinary time earnings in the ACT were \$916.80 in the August quarter 2000, an increase of \$6.90 (0.8%) over the May quarter 2000. There was a rise in total average earnings in the ACT from \$743.60 in the May quarter, to \$752.30 in the August quarter (1.2%). National trend total average earnings was \$648.40 in the August quarter 2000, up \$12.80 (2.0%) over the May quarter 2000.

Building approvals In October 2000, the trend number of dwelling units approved in the ACT decreased over the previous month by 7.8% to 179 dwelling units. Nationally, the trend number of dwelling units approved also fell over this period (3.6%) to 8,568.

The value of non-residential building approvals in the ACT in October 2000 was \$13.2 million, an increase of \$5.7 million over the previous month and a decrease of \$0.2 million over October 1999. Nationally, the value of non-residential building approvals for October 2000 was \$1,028.5 million, an increase of 3.1% over the previous month, and an increase of 18.5% over October 1999.

Established house price index The established house price annual index for the ACT during the September quarter 2000 increased by 1.0% over the previous quarter and was up by 10.6% over the same period last year. Nationally, the established house price index decreased by 0.1% over the previous quarter and was up by 7.5% over the September quarter 1999.

Housing finance The trend number of dwelling units financed (including re-financing) in the ACT in September 2000 was 705, a decrease of 3.0% over the previous month. The trend estimate for the value of commitments in the ACT was \$89 million, down 4.3% over the previous month. Re-financing of existing dwellings comprised 8% of the total value of dwelling units financed in September 2000, compared with 7.9% recorded in August 2000. Nationally, the trend number of dwelling units financed (including re-financing) during September 2000 was 42,244 compared with 42,022 in the previous month, while the trend estimate for the value of commitments decreased to \$5,334 million (0.6%) over the previous month.

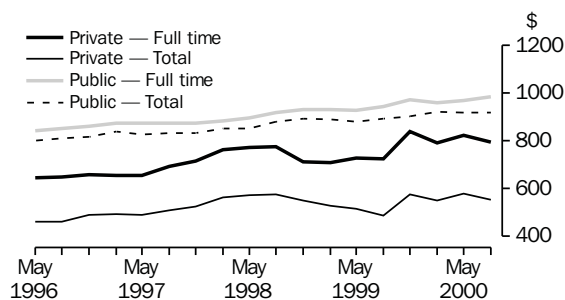
Industrial disputes In the 12 months to August 2000 there were 8 working days lost per thousand employees in the ACT compared to 87 days nationally. This is a decline over the previous month of 74.2% and 13.0% respectively.

International merchandise trade In September quarter 2000 imports and exports in the ACT both decreased. Imports decreased by -33.3%, while exports were down -28.6%. Nationally, trade increased with imports up 5.3% and exports by 6.9%.

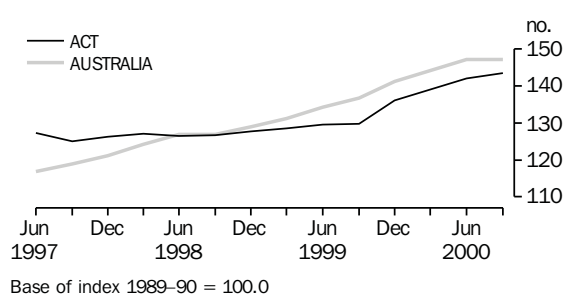
Labour force	At November 2000, the trend unemployment rate for the ACT fell over the previous month by 0.1 percentage points to 4.4% and also fell by 1.2 percentage points over the same period last year. The November 2000 trend estimate of unemployed persons in the ACT remained constant over the previous month, at 8,000 people. Trend employment increased by 0.4% to 171,700 people over the last month and increased 4.4% over November 1999. The trend ACT participation rate increased to 73.8%, while the national rate fell 0.1 percentage points to 63.6%. The national trend employment decreased over the last month by 0.1% (to 9,098,600 people), while trend unemployment increased by 0.2% (to 620,000 people). The national trend unemployment rate remained constant at 6.4%.
New motor vehicle registrations	The trend estimate for ACT new motor vehicle registrations in October 2000 was 1,163, up 0.8% over the previous month, and a rise of 7.3% since October 1999. Nationally, the trend for total new motor vehicle registrations in October 2000 increased by 1.3% to 70,628 over September 2000, and was up 14.8% over the same period last year.
Retail turnover	The original estimate for retail turnover in the ACT for October 2000 was \$259.4 million, an increase of 4.8% over the previous month and up 12.5% compared to October 1999. The national retail turnover was up 1.7% to \$12,734.0 million since the previous month and was up 2.6% compared with the previous year.
State Accounts	The ACT Gross State Product for 1999–2000 increased by 4.9%, second only to Qld which was up 5.9%. Nationally there was an increase over the same period of 4.3% in GDP.
Wage cost index	The public sector wage cost index in the ACT for the September quarter 2000 increased 1.5% over the previous quarter, and 2.7% over the September quarter 1999. The private sector wage cost index increased 2.1% over the June quarter 2000, and 4% over the September quarter 1999. The total wage cost index increased 1.8% over the previous quarter, and 3.1% over the September quarter 1999. Nationally, the total wage cost index increased 1.2% over the previous quarter and was 3.1% over the September quarter 1999.

SELECTED BUSINESS INDICATORS

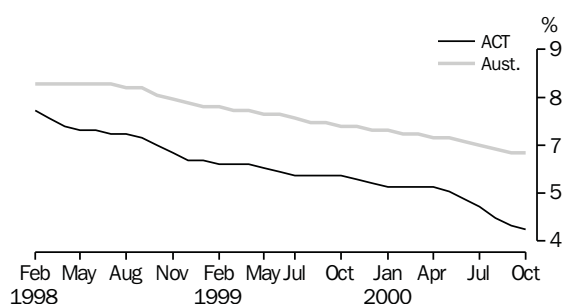
AVERAGE WEEKLY EARNINGS: Original



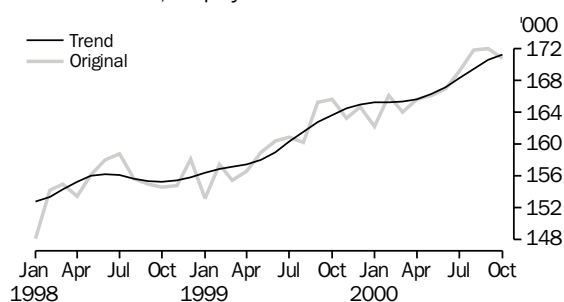
ESTABLISHED HOUSE PRICE ANNUAL INDEX



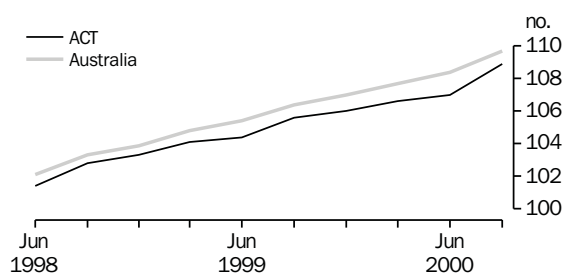
LABOUR FORCE — TREND UNEMPLOYMENT RATE



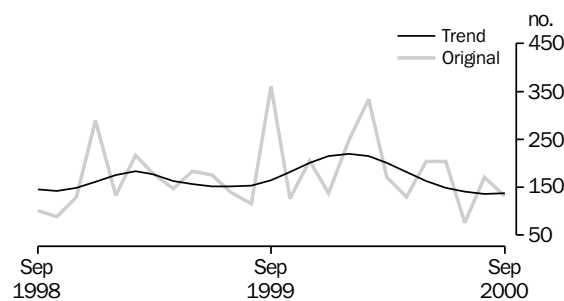
LABOUR FORCE, Employment



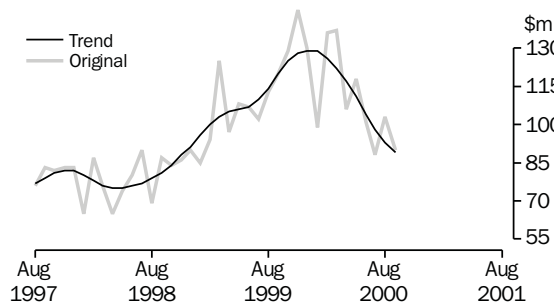
WAGE COST INDEX,
Total hourly rates of pay excluding bonuses



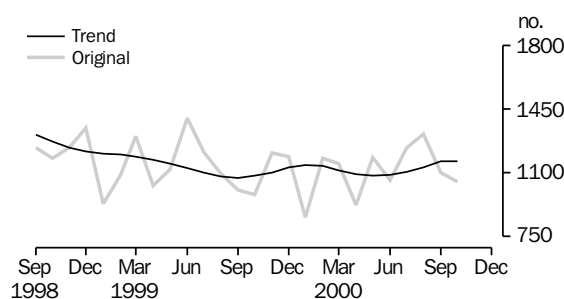
BUILDING APPROVAL — DWELLING UNITS APPROVED



HOUSING FINANCE



NEW MOTOR VEHICLE REGISTRATIONS



FEATURE ARTICLE

CAFES AND RESTAURANTS INDUSTRY IN THE ACT

Size and employment

At 30 June 1999, there were 292 businesses in the ACT in the Cafes and restaurants industry. These comprised 2.3% of the total number of these businesses nationally and above the ACT proportion of the national population at 1.6%.

At 30 June 1999, Cafes and restaurants in the ACT employed 3,762 people, contributing 2.5% of national employment in this industry. The average employment per business in the ACT was 12.9 persons per business compared to 11.8 persons per business nationally. Businesses operating in Western Australia and South Australia registered the highest average employment per business employing 15.9 and 14.2 persons per business respectively. Wages and salaries paid out by the industry in the ACT amounted to \$49.8 million which was 2.6% of the wages and salaries paid nationally.

CAFES AND RESTAURANTS INDUSTRY, 1998-99

	<i>Australian Capital Territory</i>	<i>Australia</i>
Businesses at 30 June		
no.	292	12 845
% of total	2.3	100.0
Total employment at 30 June		
no.	3 762	152 107
% of total	2.5	100.0
Wages and salaries		
\$m	49.8	1 941
% of total	2.6	100.0
Total income		
\$m	178.4	7 174
% of total	2.5	100.0

(a) Multi-State businesses are counted in each State and Territory in which they operated. Hence the counts of businesses for State and Territories do not sum to the total for Australia.

Source: *Cafes and Restaurants Industry, Australia, 1998-99* (Cat. no. 8655.0).

Income

During 1998-99, total income for the industry in the ACT was \$178.4 million, representing 2.5% of the total income generated nationally. Income per head of population in the ACT was \$579, the highest among all States and Territories and well below the national average of \$387 per head. The next highest average income per head of population was in the Northern Territory (\$449) followed by New South Wales (\$420). The lowest average income was recorded in Tasmania at \$230.

The industry average income per business in the ACT was \$610,960, well above the national average income of \$558,500. The ACT ranked third in industry average income per business, after Northern Territory (\$785,000 per business) and Western Australia (\$658,500 per business). The lowest average income per business was recorded by businesses operating in Tasmania (\$374,900) and Queensland (\$505,400).

Some selected ACT performance ratios for the Cafes and restaurants industry are:

- Total income per person employed — \$47,400
- Average income per business — \$610,960
- Average employment per business — 12.9 persons
- Labour cost per employee — \$13,200

Source More information can be found in *Cafes and Restaurants Industry, Australia, 1998–99* (Cat. no. 8655.0). Businesses in this industry are all those employing businesses recorded on the ABS business register classified to Class 5730 (Cafes and Restaurants) of the Australian and New Zealand Standard Industrial Classification (ANZSIC), 1993 (Cat. no. 1292.0). This class comprises businesses mainly engaged in operating cafes and restaurants for consumption of meals on the premises and businesses mainly engaged in catering services.

Businesses mainly engaged in retailing ready to eat food for consumption off the premises (take-away food) were excluded from this data. Details for take-away food businesses are available in *Retail Industry, Australia, 1998–99* (Cat. no. 8622.0).

From the 1998–99 Survey of the Legal Services Industry, there were 111 Solicitors' Practices in ACT (1.6% of the total number of practices nationally and equal to the ACT proportion of the national population). These practices employed 497 solicitors and barristers and 710 other staff (2.0% and 1.7% of the national totals respectively).

The wage and salary contribution of this industry in ACT was \$37.7 million or 1.9% for the industry nationally. Total income for the industry in ACT was \$108.5 million and represented 1.8% of the total income generated nationally. Average gross income per practice in the ACT was \$977,500, the highest in Australia. The national average was \$870,500 and the next highest State/Territory was New South Wales at \$968,200. This is largely a consequence of the ACT having larger practices, with an average of 4.5 solicitors, compared with the national average of 3.6 in each firm.

There are no separate State/Territory details for Barristers' practices.

Selected national performance ratios for Solicitors' Practices are:

- Total income per person employed \$92,000;
- Conveyancing to total income 12.4%;
- Property to total income 18.6%;
- Banking and finance to total income 29.4%;
- Family to total income 4.5%;
- Legal services income solicitor/barrister \$232,700;
- Total expenses per person employed \$63,200;
- Labour cost per employee \$38,800;
- Labour costs to total expenses 50.1%;
- Wages and salaries per support staff \$24,300;
- Return per solicitor/barrister \$109,600;
- Pro bono hours per practice 249,500 hours;
- Support staff to solicitors/barristers 1.7;
- Operating profit before tax per person employed \$28,800
- Operating profit before tax per qualified solicitor/barrister \$77,500;
- Operating profit margin 31.4%.

Businesses in this industry includes private solicitor and barrister practices and patent attorney businesses classified to Class 7841 (Legal Services) of the *Australian and New Zealand Standard Industrial Classification (ANZSIC), 1993* (Cat. no. 1292.0). Businesses mainly engaged in providing real estate title transfer services (performed other than by qualified legal practitioners) were excluded from the survey. For national data, refer to *Legal Services Industry, Australia, 1998–99* (Cat. no. 8667.0).

	<i>ACT</i>	<i>Aust.</i>
	%	%
Short-term		
Dec qtr 1997–Mar qtr 1998	–1.1	–0.3
Mar qtr 1998–Jun qtr 1998	–0.1	1.7
Jun qtr 1998–Sep qtr 1998	2.7	1.1
Sep qtr 1998–Dec qtr 1998	3.5	1.6
Dec qtr 1998–Mar qtr 1999	–2.7	–0.9
Mar qtr 1999–Jun qtr 1999	0.4	1.8
Jun qtr 1999–Sep qtr 1999	1.4	1.8
Sep qtr 1999–Dec qtr 1999	1.9	2.4
Dec qtr 1999–Mar qtr 2000	–5.4	–0.7
Mar qtr 2000–Jun qtr 2000	1.5	1.6
Jun qtr 2000–Sep qtr 2000	–3.6	0.8
Sep qtr 2000–Dec qtr 2000	4.1	1.3
Medium-term		
Dec qtr 1997–Dec qtr 1998	2.9	3.0
Mar qtr 1998–Mar qtr 1999	2.6	2.6
Jun qtr 1998–Jun qtr 1999	6.9	2.7
Sep qtr 1998–Sep qtr 1999	7.5	2.9
Dec qtr 1998–Dec qtr 1999	2.6	2.7
Mar qtr 1999–Mar qtr 2000	1.7	2.3
Jun qtr 1999–Jun qtr 2000	5.7	3.3
Sep qtr 1999–Sep qtr 2000	2.8	2.7
Dec qtr 1999–Dec qtr 2000	0.1	1.8
Mar qtr 2000–Mar qtr 2001	1.6	2.5
Jun qtr 2000–Jun qtr 2001	–2.6	1.5
Sep qtr 2000–Sep qtr 200	4.3	2.0

(a) These data are all expectations and are not subsequently revised.

Source: *Australian Business Expectations, December Quarter 2000* (Cat. no. 5250.0).

Indicator	Unit	ACT			Aust.		
		% change from			% change from		
		Latest figure	Previous period	Same period previous year	Latest figure	Previous period	Same period previous year
POPULATION, VITALS AND LABOUR							
POPULATION, Mar qtr 00	'000	311.1	0.3	0.7	19 104.6	0.3	1.1
Natural increase	no.	700	6.1	-7.8	29 682	-6.6	-10.6
Net migration	no.	75	-132.5	-122.9	23 699	-14.1	68.1
Total growth	no.	775	80.7	79.8	53 381	-10.1	12.9
LABOUR FORCE, Nov 00							
Original series							
Employed	'000	171.2	0.2	4.8	9 067.5	-0.6	2.0
Unemployed	'000	8.1	9.5	-17.3	601.0	2.7	-1.3
Unemployment rate	%	4.5	7.1	-19.6	6.2	3.3	-3.1
Participation rate	%	73.7	0.5	1.4	63.2	-0.6	0.3
Long-term unemployed, Oct 00	no.	1 893	-15.6	-6.5	160 634	-1.3	-18.1
Long-term unemployed as percentage of total unemployed, Oct 00	%	25.4	-5.6	16.5	27.4	6.6	-10.2
Trend series, Nov 00							
Employed	'000	171.7	0.4	4.4	9 098.6	-0.1	3.4
Unemployed	'000	8.0	—	-17.5	620.0	0.2	-6.9
Unemployment rate	%	4.4	-2.2	-21.4	6.4	—	-8.6
Participation rate	%	73.8	0.3	0.8	63.6	-0.2	0.5
WAGE AND SALARY EARNERS							
Number employed—Trend series, Jun qtr 00							
Private sector	'000	85.5	2.4	2.9	5 786.9	1.0	1.1
Public sector	'000	69.3	0.6	3.7	1 461.7	-0.3	0.8
Total	'000	154.8	1.6	3.3	7 248.6	0.7	1.0
Gross earnings—Original series, Jun qtr 00							
Private sector	\$m	606.6	0.4	-11.8	48 010.7	3.8	3.9
Public sector	\$m	824.6	-10.5	5.4	15 059.5	-2.7	2.4
Total	\$m	1 431.2	-6.2	-2.6	63 070.2	2.1	3.6
JOB VACANCIES, Aug qtr 00	'000	3.0	—	-9.1	127.7	19.6	16.1
INDUSTRIAL DISPUTES IN PROGRESS, Aug 00							
Working days lost	'000	0.1	—	-97.2	32.9	50.2	-74.7
Days lost per '000 employees (year ended ref. period)	no.	8.0	-74.2	-76.5	87.0	-13.0	26.1
HOUSING AND BUILDING ACTIVITY							
HOUSING FINANCE, Sep 00							
Secured commitments to individuals for							
Original series							
Construction of dwellings	\$m	5.0	-54.5	-64.3	538.0	-10.6	-45.9
Purchase of new dwellings	\$m	3.0	-40.0	-40.0	191.0	-10.7	-21.7
Purchase of established dwellings	\$m	71.0	-4.1	-19.3	3 429.0	-15.9	-17.4
Re-financing	\$m	11.0	-15.4	-8.3	990.0	-11.8	4.1
Total housing commitments	\$m	90.0	-12.6	-25.0	5 149.0	-14.4	-18.8
Seasonally adjusted series							
Total housing commitments	\$m	85.0	-15.0	-24.1	5 286.0	-6.7	-13.0
Trend series							
Total housing commitments	\$m	89.0	-4.3	-25.8	5 334.0	-0.6	-16.3
Dwelling units financed	no.	705	-3.0	-26.6	42 244	0.5	-10.5
PRICE INDEXES							
Established house price index, Sep qtr 00	no.	143.4	1.0	10.6	147.1	-0.1	7.5
BUILDING APPROVALS, Oct 00							
Original series							
Dwelling units	no.	185	41.2	45.7	9 377	4.8	-35.3
Value of new residential	\$m	28.4	62.3	75.3	1 204.9	4.8	-30.7
Value of residential alterations and additions	\$m	4.2	23.5	-27.6	287.3	23.2	-1.4
Value of non-residential	\$m	13.2	76.0	-1.5	1 028.5	3.1	18.5
Value of total building	\$m	45.7	60.4	29.1	2 520.7	5.9	-13.0
Trend series							
Dwelling units	no.	179	7.8	-1.6	8 568	-3.6	-44.0

Indicator	Unit	ACT			Aust.		
		% change from			% change from		
		Latest figure	Previous period	Same period previous year	Latest figure	Previous period	Same period previous year
HOUSING AND BUILDING ACTIVITY continued							
BUILDING COMMENCEMENTS, Jun qtr 00							
New houses	no.	422	11.1	11.3	29 706	-6.2	8.3
Value of houses commenced	\$m	59.8	4.4	20.1	3 999.4	-4.6	18.1
Value of non-residential building commenced	\$m	121.2	36.5	78.0	3 042.9	9.6	7.6
Value of total commencements	\$m	209.2	9.0	38.2	9 380.6	-0.2	16.1
ENGINEERING CONSTRUCTION, Jun qtr 00							
Private sector							
Value of work commenced	\$m	50.6	-29.5	208.5	2 753.2	-20.1	-13.1
Value of work done	\$m	48.3	-13.9	109.1	2 946.4	2.7	-7.7
Value of work yet to be done	\$m	64.0	77.3	68.9	5 069.3	-10.3	-10.9
Public sector							
Value of work done	\$m	30.9	32.1	6.9	2 266.9	19.1	6.6
PRICES, WAGES AND CONSUMER SPENDING							
CONSUMER PRICE INDEX, Sep qtr 00(a)							
Food	no.	134.1	2.3	5.0	132.4	1.7	3.0
Housing(b)	no.	106.7	6.1	11.1	107.4	6.1	9.5
Transportation(b)	no.	138.6	1.6	5.3	135.6	2.6	6.9
All groups	no.	130.7	3.8	6.8	130.9	3.7	6.1
AVERAGE WEEKLY EARNINGS, Aug qtr 00							
Full-time adult ordinary time earnings							
Original series							
Males	\$	992.1	1.3	10.3	848.3	1.9	6.5
Females	\$	832.2	0.7	6.2	710.9	1.9	5.2
Persons	\$	917.3	0.6	7.7	798.1	2.0	6.2
Trend series							
Males	\$	987.5	0.7	8.7	846.8	1.4	5.8
Females	\$	832.7	0.8	4.8	710.2	1.5	5.0
Persons	\$	916.8	0.8	6.5	796.6	1.5	5.5
WAGE COST INDEX, Sep qtr 00(c)							
Public sector	no.	108.2	1.5	2.7	110.3	1.1	2.9
Private sector	no.	110.1	2.1	4.0	109.5	1.3	3.1
Total	no.	108.9	1.8	3.1	109.7	1.2	3.1
RETAIL TURNOVER, Oct 00							
Original series							
Food retailing	\$m	95.7	4.4	16.0	5 074.6	2.1	1.0
Department stores	\$m	25.3	6.3	5.4	1 050.1	1.4	0.6
Hospitality and services	\$m	43.1	4.4	26.8	2 302.7	0.7	6.3
All other retailing	\$m	95.3	5.0	5.8	4 306.6	2.0	3.1
Total	\$m	259.4	4.8	12.5	12 734.0	1.7	2.6

(a) Base year: 1989-90 = 100.0.

(b) The 14th Series Australian Consumer Price Index was introduced September quarter 2000. Some changes include an updated commodity classification and weighting pattern and changes in composition of some groups. For more details of changes, refer to Information Paper: Introduction of the 14th Series Australian Consumer Price Index (Cat. no. 6456.0) released 29 September 2000.

(c) Base of each index is September quarter 1997 = 100.0.

Indicator	Unit	ACT			Aust.		
		% change from			% change from		
		Latest figure	Previous period	Same period previous year	Latest figure	Previous period	Same period previous year
TOURIST ACCOMMODATION, Jun qtr 00							
Original series							
Room nights occupied	'000	296.4	9.3	14.1	10 000.0	-0.9	6.1
Room occupancy rate	%	64.7	6.2	12.3	57.1	-1.9	1.6
Guest nights	'000	486.8	21.0	17.0	17 370.0	-3.7	5.8
Guest arrivals	'000	222.8	23.8	17.9	7 847.0	-1.1	4.4
Takings from accommodation	\$'000	30.1	27.0	18.5	1 039 478.0	-4.5	9.8
NEW MOTOR VEHICLE REGISTRATIONS, Oct 00							
Original series	no.	1 052	-4.4	7.0	65 050	1.7	14.4
Seasonally adjusted series	no.	1 133	-3.2	4.7	64 691	-5.1	8.1
Trend series	no.	1 163	0.8	7.3	70 628	1.3	14.8
STATE ACCOUNTS							
STATE ACCOUNTS, Jun qtr 00							
Trend series (chain volume measure)(a)							
General government final consumption expenditure	\$m	2 586	3.6	18.3	30 329	2.4	9.9
Household final consumption expenditure	\$m	1 755	2.2	8.1	93 580	0.8	3.9
Private gross fixed capital formation	\$m	411	1.2	32.2	31 906	1.8	7.4
Public gross fixed capital formation	\$m	228	-3.0	-14.3	6 415	-4.4	-3.8
State final demand	\$m	4 959	2.1	13.0	157 959	1.0	4.5
GROSS STATE PRODUCT (trend, chain volume measures) 1999-00							
	\$m	12 669	4.9	..	620 963	4.3	..
PRIVATE NEW CAPITAL EXPENDITURE, Jun qtr 00							
Original series (at current prices)							
Buildings and structures	\$m	24	14.3	4.3	3 215	16.2	14.8
Equipment, plant and machinery	\$m	86	21.1	75.5	8 126	17.1	3.8
Total	\$m	110	19.6	52.8	11 341	16.8	6.7
Trend series (at current prices)							
Buildings and structures	\$m	23	—	27.8	2 966	5.6	-5.1
Equipment, plant and machinery	\$m	83	7.8	48.2	7 529	-1.2	-1.0
Total	\$m	106	6.0	43.2	10 495	0.7	-2.2
INTERNATIONAL MERCHANDISE TRADE, Sep qtr 00							
Imports	\$m	2	-33.3	0.0	30 406	5.3	16.9
Exports	\$m	5	-28.6	-44.4	28 500	6.9	30.2

(a) Quarterly state final demand details are released as a special data service (Cat. no. 5206.0.40.001).

(b) Reference year for chain volume measures is 1998-99.

Source: Australian Demographic Statistics (Cat. no. 3101.0); Australian National Accounts: Quarterly State Details (Cat. no. 5206.0.40.001); Average Weekly Earnings, States and Australia (Cat. no. 6302.0); Building Activity, Australia (Cat. no. 8752.0); Building Approvals, Australia (Cat. no. 8731.0); Consumer Price Index (Cat. no. 6401.0); Housing Finance, Australia (Cat. no. 5609.0); House Price Indexes (Cat. no. 6416.0); Industrial Disputes, Australia (Cat. no. 6321.0); Job Vacancies, Australia (Cat. no. 6354.0); Labour Force, Australia, Preliminary (Cat. no. 6202.0); New Motor Vehicle Registrations, Australia Preliminary (Cat. no. 9301.0); Private New Capital Expenditure, State Estimates (Cat. no. 5646.0); Retail Trade, Australia (Cat. no. 8501.0); Tourist Accommodation, Australia (Cat. no. 8635.0); Wage Cost Index, Australia (Cat. no. 6345.0).

Indicator	Unit	Latest period	NSW	Vic.	Qld	SA	WA	Tas.	NT	ACT	Aust.
POPULATION	'000	Mar qtr 00	6 448.8	4 753.9	3 549.3	1 496.1	1 877.5	470.3	194.5	311.1	19 104.6
LABOUR FORCE , trend series											
Employed persons	'000	Nov 00	3 036.7	2 298.4	1 684.0	679.6	931.6	200.3	92.8	171.7	9 098.6
Unemployment rate	%	Nov 00	5.6	6.1	7.7	7.3	6.3	9.4	5.5	4.4	6.4
WAGE AND SALARY EARNERS , trend series											
Private sector	'000	Jun qtr 00	1 944.5	1 553.5	1 025.7	416.6	589.0	115.4	56.7	85.5	5 786.9
Public sector	'000	Jun qtr 00	465.7	309.2	292.1	114.6	147.7	41.2	22.3	69.3	1 461.7
Total	'000	Jun qtr 00	2 410.2	1 862.7	1 317.8	531.2	736.7	156.6	79.0	154.8	7 248.6
STATE ACCOUNTS											
Gross state product (chain volume measures)(a)	\$m	1998-99	209 937	151 213	96 000	40 493	63 198	11 059	6 460	11 822	591 546
PRIVATE NEW CAPITAL EXPENDITURE											
Total (at current prices), trend series	\$m	Jun qtr 00	3 863	2 682	1 870	650	1 238	125	125	106	10 495
BUILDING APPROVALS											
Dwelling units approved, original series	no.	Oct 00	3 458	2 099	1 715	514	1 213	123	70	185	9 377
Dwelling units approved, trend series	no.	Oct 00	2 776	2 251	1 583	429	1 188	92	74	179	8 568
Value of non-residential building approved, original series	\$m	Oct 00	380.7	225.3	239.5	45.3	107.5	10.6	6.4	13.2	1 028.5
Value of all buildings approved, original series	\$m	Oct 00	938.4	622.6	481.9	114.0	270.7	28.3	19.1	45.7	2 520.7
ENGINEERING CONSTRUCTION, original series											
Value of engineering construction work done	\$m	Jun qtr 00	1 802.7	858.9	1 325.3	347.5	663.9	73.1	62.6	79.2	5 213.2
AVERAGE WEEKLY EARNINGS , trend series											
Full-time adult ordinary time earnings	\$	Aug qtr 00	834.7	782.4	747.1	743.5	812.6	745.3	805.1	916.8	796.6
RETAIL TRADE TURNOVER , original series	\$m	Oct 00	4 452.7	2 971.6	2 434.0	931.6	1 271.3	274.7	138.6	259.4	12 734.0
TOURIST ACCOMMODATION , original series											
Room nights occupied	'000	Jun qtr 00	3 323.9	1 628.9	2 677.2	536.4	934.0	248.5	354.6	296.4	10 000.0
Room occupancy rate	%	Jun qtr 00	58.1	57.1	56.5	56.4	54.4	49.7	63.0	64.7	57.1
NEW MOTOR VEHICLE REGISTRATIONS , trend series	no.	Oct 00	24 068	18 704	13 497	4 417	6 822	1 292	665	1 163	70 628
	Unit	Latest period	Syd.	Melb.	Bris.	Adel.	Perth	Hob.	Dar.	Canb.	Aust.
CONSUMER PRICE INDEX(b)											
Food	no.	Sep qtr 00	133.4	131.6	131.4	133.8	132.9	130.9	131.1	134.1	132.4
Housing	no.	Sep qtr 00	115.8	97.8	112.0	103.9	101.3	105.5	123.9	106.7	107.4
Transportation	no.	Sep qtr 00	136.7	134.5	134.6	136.8	136.0	133.3	130.6	138.6	135.6
All Groups	no.	Sep qtr 00	131.6	130.4	131.3	132.3	128.6	131.3	130.0	130.7	130.9
AVERAGE RETAIL PRICES											
Milk, carton, supermarket sales	1 litre	Sep qtr 00	133	147	142	137	144	129	149	122	..
Bread, white loaf,sliced, supermarket sales	650 g(c)	Sep qtr 00	236	246	217	219	221	239	224	233	..
Beef, rump steak	1 kg	Sep qtr 00	1 223	1 113	1 104	1 202	1 143	1 080	1 227	1 235	..
Chicken, frozen	1 kg	Sep qtr 00	369	353	354	339	360	325	414	368	..
Potatoes	1 kg	Sep qtr 00	109	135	112	75	135	103	135	121	..
Coffee, instant (jar)	150 g	Sep qtr 00	624	623	604	551	570	655	543	636	..
Scotch nip, public bar	30 ml	Sep qtr 00	371	368	311	385	411	296	370	309	..
Private motoring petrol											
Leaded	1 litre	Sep qtr 00	95.9	94.9	87.5	95.4	97.0	102.2	103.8	98.6	..
Unleaded	1 litre	Sep qtr 00	93.0	92.0	84.6	92.6	94.0	99.9	100.9	95.6	..

(a) Experimental series. Users are cautioned these estimates are derived indirectly by calculating a deflator from the expenditure components of the state series concerned. Therefore, in general, the sum of the state estimates does not equal the estimates for Australia. Reference year for chain volume measures is 1998-99.

(b) Base year: 1989-90 = 100.0. The 14th Series Australian Consumer Price Index was introduced September quarter 2000. Some changes include an updated commodity classification and weighting pattern and changes in composition of some groups. For more details of changes, refer to Information Paper: Introduction of the 14th Series Australian Consumer Price Index (Cat. no. 6456.0) released 29 September 2000.

(c) 680g in Hobart and Darwin.

Indicator	Unit	Latest period	NSW	Vic.	Qld	SA	WA	Tas.	NT	ACT	Aust.
POPULATION	'000	Mar qtr 00	0.2	0.4	0.4	0.1	0.4	—	0.2	0.3	0.3
LABOUR FORCE , trend series											
Employed persons	'000	Nov 00	-0.3	0.1	-0.2	-0.1	0.1	0.1	0.6	0.4	-0.1
Unemployment rate	%	Nov 00	1.8	-1.6	1.3	-1.4	1.6	—	1.8	-2.2	—
WAGE AND SALARY EARNERS , trend series											
Private sector	'000	Jun qtr 00	2.1	0.4	0.4	-0.6	0.5	-1.1	3.5	2.4	1.0
Pubic sector	'000	Jun qtr 00	-0.8	0.5	-0.8	0.8	-1.3	0.7	0.4	0.6	-0.3
Total	'000	Jun qtr 00	1.6	0.4	0.1	-0.3	0.1	-0.6	2.7	1.6	0.7
STATE ACCOUNTS											
Gross state product (chain volume measures)(a)	\$m	1998-99	3.9	5.8	4.3	2.1	2.0	2.4	7.1	2.6	4.5
PRIVATE NEW CAPITAL EXPENDITURE											
Total (at current prices), trend series	\$m	Jun qtr 00	2.7	-1.6	-0.8	4.3	-0.8	9.6	-23.2	6.0	0.7
BUILDING APPROVALS											
Dwelling units approved, original series	no.	Oct 00	25.5	-17.1	-15.9	20.4	0.5	3.3	11.4	41.2	4.8
Dwelling units approved, trend series	no.	Oct 00	2.2	-8.6	-7.1	-7.7	-3.2	-5.4	-12.2	7.8	-3.6
Value of non-residential building approved, original series	\$m	Oct 00	18.8	-29.5	5.5	35.1	14.0	-118.9	-178.1	76.0	3.1
Value of all buildings approved, original series	\$m	Oct 00	18.5	-11.6	-1.5	26.2	6.5	-34.6	-48.2	60.4	5.9
ENGINEERING CONSTRUCTION , original series											
Value of engineering construction work done	\$m	Jun qtr 00	20.2	-2.7	7.3	-0.3	-0.2	2.2	5.3	0.4	-8.4
AVERAGE WEEKLY EARNINGS , trend series											
Full-time adult ordinary time earnings	\$	Aug qtr 00	1.2	1.6	2.1	1.7	1.4	1.4	1.1	0.8	1.5
RETAIL TRADE TURNOVER , original series	\$m	Oct 00	-0.9	4.2	3.2	3.4	0.1	3.6	-1.0	4.8	1.7
TOURIST ACCOMMODATION , original series											
Room nights occupied	'000	Jun qtr 00	-1.9	-8.9	4.0	-2.7	0.2	-34.8	24.6	9.3	-0.9
Room occupancy rate	%	Jun qtr 00	-3.8	-9.1	3.2	-2.8	-0.2	-33.2	24.3	6.2	-1.9
NEW MOTOR VEHICLE REGISTRATIONS , trend series	no.	Oct 00	0.8	1.5	1.2	2.6	1.6	2.0	-0.3	0.8	1.3
	Unit	Latest period	Syd.	Melb.	Bris.	Adel.	Perth	Hob.	Dar.	Canb.	Aust.
CONSUMER PRICE INDEX(b)											
Food	no.	Sep qtr 00	2.0	1.2	1.8	1.4	2.4	1.4	0.8	2.3	1.7
Housing	no.	Sep qtr 00	5.4	6.2	5.9	5.4	5.8	6.0	4.6	6.1	6.1
Transportation	no.	Sep qtr 00	2.3	2.5	3.0	3.6	3.2	3.0	1.0	1.6	2.6
All Groups	no.	Sep qtr 00	3.5	3.7	3.7	3.6	3.6	3.7	3.3	3.8	3.7
AVERAGE RETAIL PRICES (cents)											
Milk, carton, supermarket sales	1 litre	Sep qtr 00	-1.5	-2.0	-2.1	-4.4	-0.7	-4.7	2.7	-0.8	..
Bread, white loaf, sliced, supermarket sales	650 g(c)	Sep qtr 00	2.1	0.8	0.9	1.8	-1.4	-0.8	-0.4	0.9	..
Beef, rump steak	1 kg	Sep qtr 00	-6.1	-2.2	-3.2	-8.4	-2.4	-1.6	-5.8	-1.2	..
Chicken, frozen	1 kg	Sep qtr 00	-1.4	-6.8	6.5	0.3	-0.8	-17.5	8.0	-4.2	..
Potatoes	1 kg	Sep qtr 00	3.7	-0.7	8.0	-8.0	-5.9	1.0	—	-0.8	..
Coffee, instant (jar)	150 g	Sep qtr 00	11.1	1.3	5.1	5.4	-4.9	0.6	-14.9	0.3	..
Scotch nip, public bar	30 ml	Sep qtr 00	6.7	7.1	8.4	4.2	4.4	7.1	4.9	9.2	..
Private motoring petrol											
Leaded	1 litre	Sep qtr 00	7.5	10.9	9.5	9.7	10.4	8.3	7.8	8.7	..
Unleaded	1 litre	Sep qtr 00	7.7	10.9	9.8	9.9	10.5	8.3	7.9	8.9	..

(a) Experimental series. Users are cautioned these estimates are derived indirectly by calculating a deflator from the expenditure components of the state series concerned. Therefore, in general, the sum of the state estimates does not equal the estimates for Australia. Reference year for chain volume measures is 1998-99.

(b) Base year: 1989-90 = 100.0. The 14th Series Australian Consumer Price Index was introduced September quarter 2000. Some changes include an updated commodity classification and weighting pattern and changes in composition of some groups. For more details of changes, refer to Information Paper: Introduction of the 14th Series Australian Consumer Price Index (Cat. no. 6456.0) released 29 September 2000.

(c) 680g in Hobart and Darwin.

INDEX OF FEATURE ARTICLES PUBLISHED IN ACT BUSINESS INDICATORS

<i>Issue</i>	<i>Title</i>	<i>Page reference</i>
Dec 2000	Cafes and Restaurants Industry in the ACT	6–7
Dec 2000	Legal Services Industry in the ACT	8
Nov 2000	Manufacturing Industry in the ACT	6–7
Oct 2000	Computing Services Industry 1998–99	6–8
Sep 2000	Motor Vehicle Use in the ACT	6
Aug 2000	Household Expenditure on Goods and Services in the ACT	6
Jul 2000	Small Business in the ACT	6
Jun 2000	Sports Attendance	7
	Attendance at Selected Cultural Venues	8
May 2000	Employee Earnings, Benefits and Trade Union Membership	7–8
Apr 2000	Emergency Services and Public Transport Usage in the ACT	8–12
Mar 2000	Forms of Employment	6–8
Feb 2000	Job Search Experience of Unemployed Persons	6–7
Jan 2000	Transition from Education to Work, May 1999	6–7
Dec 1999	Structure of the ACT Economy	6
	Participation in Sport and Physical Activities	7
Nov 1999	Crime and Safety in the ACT	6–8
Oct 1999	Labour Force Experience in the ACT	6–8
Sep 1999	Career Experience in the ACT	7–8
	Carers in the ACT	9
Aug 1999	Stock of Human Resources in Science and Technology	6–8
Jul 1999	Persons with a Disability in the ACT	6–9
Jun 1999	Participation in Education in the ACT	6–8
May 1999	Transition from Education to Work of Persons Aged 15–64 in the ACT	7–8
Apr 1999	Persons Not in the Labour Force in the ACT	6–8
Mar 1999	Education and Labour Force Status of the ACT's Young People	6–8
Feb 1999	Income and Living Standards in the ACT	6–9
Jan 1999	Education and Training Experience of ACT Residents	6–9
Dec 1998	Families and Labour Force Status in the ACT	6–9
Nov 1998	Retrenchment and Redundancy in the ACT	6–8
	Retail Turnover in the ACT	9
Oct 1998	Research and Experimental Development in the ACT	6–9
Sep 1998	Labour Force Mobility in the ACT	6–7
	Income Distribution in the ACT	8–9
Aug 1998	ACT Investors in Rental Dwellings	6–8
Jul 1998	Retirement and Retirement Intentions	6–9
Jun 1998	Profile of Small Business in the ACT	7–9
May 1998	Participation in Education in the ACT	7–8
Apr 1998	Retail Turnover in the ACT by Type of Retailing and Shopping Centre	7
	Shopping Preferences in the ACT	7–9
Mar 1998	Characteristics of Small Business	8–9
Feb 1998	Weekly Earnings of Employees in the ACT	8–9
Jan 1998	Transition from Education to Work of Working Age persons in the ACT	7–8

FOR MORE INFORMATION...

- INTERNET** www.abs.gov.au the ABS web site is the best place to start for access to summary data from our latest publications, information about the ABS, advice about upcoming releases, our catalogue, and Australia Now—a statistical profile.
- LIBRARY** A range of ABS publications is available from public and tertiary libraries Australia-wide. Contact your nearest library to determine whether it has the ABS statistics you require, or visit our web site for a list of libraries.
- CPI INFOLINE** For current and historical Consumer Price Index data, call 1902 981 074 (call cost 77c per minute).
- DIAL-A-STATISTIC** For the latest figures for National Accounts, Balance of Payments, Labour Force, Average Weekly Earnings, Estimated Resident Population and the Consumer Price Index call 1900 986 400 (call cost 77c per minute).

INFORMATION SERVICE

Data which have been published and can be provided within five minutes are free of charge. Our information consultants can also help you to access the full range of ABS information—ABS user-pays services can be tailored to your needs, time frame and budget. Publications may be purchased. Specialists are on hand to help you with analytical or methodological advice.

- PHONE** **1300 135 070**
- EMAIL** **client.services@abs.gov.au**
- FAX** 1300 135 211
- POST** Client Services, ABS, GPO Box 796, Sydney 1041

WHY NOT SUBSCRIBE?

ABS subscription services provide regular, convenient and prompt deliveries of ABS publications and products as they are released. Email delivery of monthly and quarterly publications is available.

- PHONE** 1300 366 323
- EMAIL** subscriptions@abs.gov.au
- FAX** 03 9615 7848
- POST** Subscription Services, ABS, GPO Box 2796Y, Melbourne 3001



2130380012008
ISSN 1320-808X

RRP \$17.00